
Wind Loads on Structures 2005

Network Installation Guide

<http://www.StandardsDesign.com>

Copyright Information

Wind Loads on Structures 2005 Installation Guide

© 2010 Standards Design Group, Inc. All rights reserved.

This document is for information purposes only. Standards Design Group, Inc. makes no warranties, expressed or implied.

Other brand and product names are trademarks or registered trademarks of the respective holders. Microsoft is a registered trademark and Windows, Windows NT, Windows 2000 and the Windows logo, the Windows NT logo, and the Windows 2000 logo are registered trademarks of the Microsoft Corporation.

Information in this document is subject to change without notice and does not represent a commitment on the part of Standards Design Group, Inc. The software described in this document is furnished under a license agreement. The software may be used only in accordance with the terms of this agreement. It is against the law to copy the software on any medium except as specifically allowed in the license agreement. No part of this manual may be reproduced or retransmitted in any form or by any means, electronically or mechanically, including photocopying, recording, or information recording and retrieved systems, for any other purpose other than the purchaser's personal use, without the express written permission of Standards Design Group, Inc.

Contents

Copyright Information	2
Contents	3
Wind Loads on Structures 2005 Product Support	4
Necessary Information for Technical Support	4
Contacting Standards Design Group	5
Chapter 1 Overview	6
Introduction	6
Installation Overview	7
Chapter 2 Installation Walkthrough	8
Server Installation Steps	8
Client Installation Steps	8
Chapter 3 Changes in the Network Version	9
Wind Loads on Structures 2005 NW	9
License Manager	9
Chapter 4 Advanced Information	11
Installed Files	11
Registry Entries	13
Testing Wind Loads on Structures 2005 NW on a temporary server	14
Moving Wind Loads on Structures 2005 NW from a temporary server to a production server	14
Chapter 5 Trouble-Shooting	15
Error Message, Possible Causes, and Solutions	15

Wind Loads on Structures 2005 Product Support

Necessary Information for Technical Support

The technical support staff at Standards Design Group (SDG) likes to provide detailed and accurate answers to customers' questions. In order to do so, its representatives will need the following information:

1. Your full name and the name of the registered user, if different.
2. Your phone and fax number or an email address.
3. The version number and serial number. These can be found in the *About Box*, which you can quickly access by clicking the *About Wind Loads on Structures 2005* menu selection under the *Help Menu*.
4. The system information of your computer, including the make and model of the machine, the operating system, amount of memory, and the system resources.
5. A detailed description of the problem. Describe any error messages exactly as they appear. Please list the steps and conditions that led to the problem.

Contacting Standards Design Group

This section contains information on how to contact SDG.

Wind Loads on Structures Network via Internet or email

Description	Phone, Address
SDG WWW site	http://www.StandardsDesign.com
Technical support via email	Tech@StandardsDesign.com
Suggestions for future improvements in WLS	Info@StandardsDesign.com

Technical Support

Description	Phone, Address
Phone requests for technical assistance, Monday through Friday 8:00 AM to 5:00 PM Central Time	Phone (800) 366-5585
Fax requests for technical support	FAX (806) 792-7069
Mail requests for technical support	Mailing Address Standards Design Group, Inc. 3417 73rd St., Suite K-3 Lubbock, TX 79423

Sales, Marketing, and Licensing

Description	Phone, Address
Telephone orders or requests for information about all SDG products	Phone (800) 366-5585
	FAX (806) 792-7069
	Email Info@StandardsDesign.com
	Address

Chapter 1 Overview

Introduction

The network version of Wind Loads on Structures 2005 Network provides an easy to use alternative to having one computer to which many users must go to perform Wind Load Calculations. The network version automatically limits the number of users to the number of licenses you have purchased. After installation of the program on individual user computers, the users interact with the software in the same manner as with the standard version of the software. The only exception occurs when all of the licenses are in use. In this case, the program notifies the user that all the licenses are in use and suggests attempting access later. Since the program requires no special server services, the user can make the server Installation on any computer, not necessarily a computer running Windows™ NT Server 4.0 or Windows™ 2000 Server, with the exception that everyone using the program must have network access to the computer. This software uses very little server resources since the individual user computers run the software from their memory. In addition to the main Wind Loads on Structures 2005 Network program, a second program, Wind Loads on Structures 2005 Network - License Manager, maintains the user files that keep track of the use of the licenses.

Installation Overview

Phase 1 Server Installation Program:

The Server Installation Program located on the CD labeled "Network", copies the Client Installation Program and the required program files into a specified directory on the server. The Server Installation Program does not copy files to the system directory of the server. It makes minimal entries to the server registry. Chapter 4, Advanced Information, contains a list of the files and the registry entries to the server. After completing installation, all users of the program must have read/write access to the install directory. Since the users access the program through their Start Menu, minimal risk exists for files to be mistakenly deleted or damaged. If additional security is required, Chapter 4, Advanced Information, contains a list of individual files to which users must have read/write access.

Phase 2 Client Installation Program:

The Client Installation Program, located in the server's directory, is run from the client computer. The Client Installation Program copies the required dependency files to the client computer's Windows™ system directory and creates a shortcut in the Start Menu. The shortcut references the program files in the directory on the client computer. The actual executable program is on the client's computer. After completing program installation on all client computers, the server manager may remove Client Installation files from the directory. However please exercise caution to not remove any files required for the program to run properly (see list in Chapter 4 Advanced Information). If the user moves or deletes the Client Installation files, they must be replaced before adding any more clients.

Chapter 2 Installation Walkthrough

Server Installation Steps

1. Insert "Network" CD-ROM into disk drive.
2. CD will run automatically
 - *If the CD does not run automatically:
 1. Click on the Start button then click on Run
 2. Type D:\Setup.exe then click OK (D denotes the drive letter for the CD-ROM disk drive).
3. Installshield will guide you through the installation process.
4. When prompted, enter the User Name, Company Name and Serial Number
 - *The Serial Number is located on the left side, inside of the CD case.
5. After completing installation, assign Read/Write user rights in the install directory.

Client Installation Steps

1. Using the Client computer, go to the appropriate directory on the Server.
2. Locate and double click on the Setup.exe file in this directory. (*This is not the Setup.exe on the original CD.*)
3. Installshield will guide you through the installation process.
4. When prompted, enter the User Name, Company Name and Serial Number
 - *The Client Install has the same Serial Number as the Server install.
5. Reboot the computer if required.

Chapter 3 Changes in the Network Version

Wind Loads on Structures 2005 NW

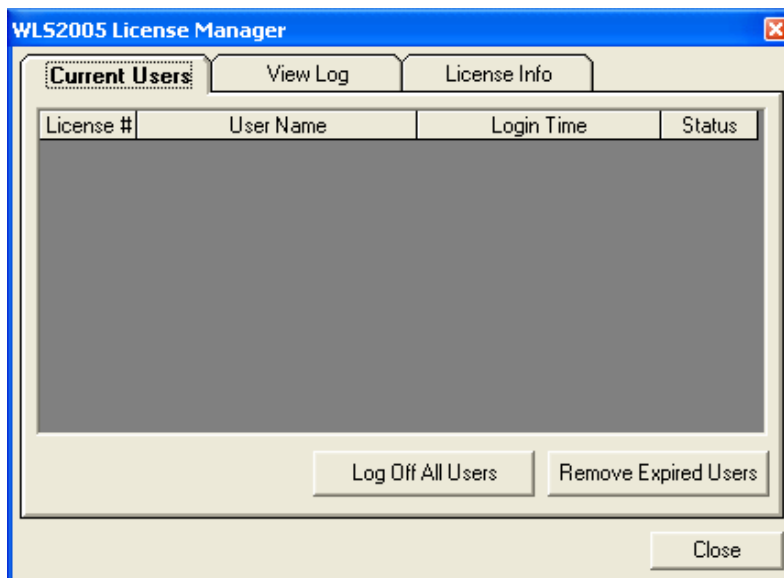
Besides the addition of the license verification functionality, the network version works the same as the standard version.

License Manager

The License Manager contains license information, shows a log of program use, and provides a list of current program users. No shortcut exists for this program since it will not be used very often. To access this program go to the directory on the server and double click on the WLS2005NWmgr.exe file.

Current Users Tab

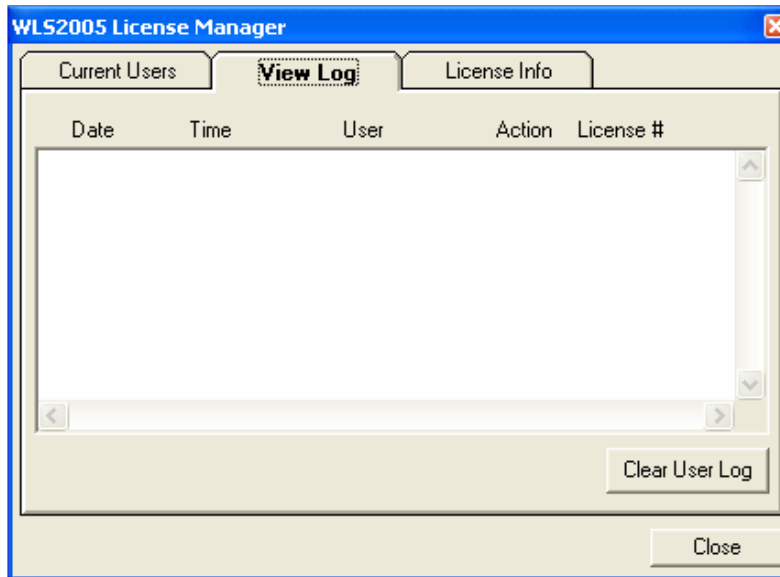
The Current Users tab contains a list of the licenses and the status of each license (i.e. active or open). Additional information includes the users logged into the program and the date & time of logging into the program. Buttons located on this tab allow for the removal of all users and the removal of expired users.



Current Users tab in License Manager Program

View Log Tab

The View Log tab shows the use history of the program. More specifically, it indicates the date and time the users logged in and out of the program and the licenses they used. The Clear User Log button clears the user log.



View Log tab in License Manager Program

License Information Tab

The License Information tab lists the owners of the license and the number of licenses.



License Info tab in License Manager Program

Chapter 4: Advanced Information

Installed Files

Files copied to the installation directory on the server

Category	File Name	Description
Client Install	Data1.cab	Required files for client install
	Data1.hdr	Required files for client install
	_sys1.cab	Required files for client install
	_sys1.hdr	Required files for client install
	Data.tag	Required files for client install
	Lang.dat	Required files for client install
	_inst32i.exe	Required files for client install
	_ISDe.exe	Required files for client install
	Os.dat	Required files for client install
	Readme.txt	Required files for client install
	Layout.bin	Required files for client install
	Setup.exe	Client Setup Program
	Setup.ini	Required files for client install
	Setup.ins	Required files for client install
	Setup.lid	Required files for client install
Setup.dll	Required files for client install	
Programs Files	WLS2005NW.exe	Wind Loads on Structures 2005 Program
	WLS2005NWMgr.exe	User License Manager Program
	User.log	Required files for server install
	Lic.log	Required files for server install
	Escarp.jpg	Required files for client install
	Ridg.jpg	Required files for client install
	Alaskamap.jpg	Required files for client install
	VelMapLinesColor.jpg	Required files for client install
	WindLoad.cnt	Required files for client install
	WindLoad.hlp	Required files for client install
	Inetwh32.dll	Required files for client install
	Roboex32.dll	Required files for client install
	WLS2005NW.rsu	Required files for server install

Files copied to the system directory on the server

Category	File Name	Size	Description
None			

Files copied to the system directory on the client computer

Category	File Name	Description
Dependency	MSVBVM60.dll	Required for WLS2005NW to run
	ComCat.dll	Required for WLS2005NW to run
	MsFlexgrd.ocx	Required for WLS2005NW to run
	ComDlg32.ocx	Required for WLS2005NW to run
	MsComCtl.ocx	Required for WLS2005NW to run
	Tabctl32.ocx	Required for WLS2005NW to run

Files copied to the installation directory on the client computer

Category	File Name	Size	Description
None			

Registry Entries

Entries to the server registry

Root Key	Key	Value
HKEY_LOCAL_MACHINE	\software\microsoft\windows\currentversion\uninstall\Wind Loads on Structures 2005 nw \software\microsoft\windows\currentversion\uninstall\Wind Loads on Structures 2005 nw \software\microsoft\windows\current version\App Paths\WLS2005NW.exe\default \software\microsoft\windows\currentversion\App Paths\WLS2005NW.exe\Path \software\Standards Design Group, Inc\Wind Loads on Structures 2005 NW\1.0.0	Window Glass Design NW C:\Windows\ISUnInst.exe-f"C:\Program Files\Wind Loads on Structures 2005 Files\Wind Loads on Structures 2005 C:\Program Files\Wind Loads on Structures 2005 NW\WLS2005NW.exe C:\Program Files\Window Glass Design 204 NW

Entries to the client registry

Root Key	Key	Value
HKEY_CLASSES_ROOT	\.wls \WLS2005.designfile\shell\open\command	WLS2005.designfile (Install Path to Server)
HKEY_LOCAL_MACHINE	\software\microsoft\windows\currentversion\uninstall\Wind Loads on Structures 2005 nw\ display name \software\microsoft\windows\current version\Uninstall\Wind Loads on Structures 2005 NW\ Uninstall String \software\microsoft\windows\currentversion\App Paths\WLS2005NW.exe\Default \software\microsoft\windows\currentversion\App Paths\WLS2005NW.exe\Path \software\Standards Design Group, Inc\Wind Loads on Structures 2005 NW\1.0.0\name \software\Standards Design Group, Inc\Wind Loads on Structures 2005 NW\1.0.0\Company \software\Standards Design Group\Wind Loads on Structures 2005 NW\ 1.0.0\ProductLicense \software\Standards Design Group, Inc\Wind Loads on Structures 2005 NW\1.0.0\InstallPath	Wind Loads on Structures 2005 NW C:\Windows\lsUninstall.exe-f"C:\Program Files\Wind Loads on Structures 2005 NW\Uninst.isu" C:\Program Files\Wind Loads on Structures 2005 NW\WLS2005NW.exe C:\Program Files\Wind Loads on Structures 2005 NW (User Defined) (User Defined) (User specific serial number created by Standards Design Group, Inc) Path to server location of Wind Loads on Structures 2005 Network file folder

Testing Wind Loads on Structures 2005 NW on a Temporary Server

You can perform the Server Installation on a temporary server for testing the program on your network. Run the installation procedures outlined in Chapter 2.

Moving Wind Loads on Structures 2005 NW from a Temporary Server to a Production Server

To transfer the Server Installation from a temporary server to a production server, copy the Server Installation directory and paste it into the production server. Since the client computers only reference the files on the server, only the shortcut path must be updated. If the same server installation path is maintained when you transfer the files to the production server, then the computer name in the shortcut will need to be changed. For example, if the temporary server name is SDGtemp and the production server name is SDG1 then the shortcut on the client computer must be changed from \\Samtemp\c\Program Files\Wind Loads on Structures 2005 NW\WLS2005NW.exe to \\Sam1\c\Program Files\Wind Loads on Structures 2005 NW\WLS2005NW.exe. Be sure to check the *InstallFile* path in the Registry Editor to make sure it leads to the Wind Loads on Structures 2005 Network folder on the Server.

Chapter 5 Trouble-Shooting

Error Message	Possible Cause	Solution
Unable to locate license information.	The Slic.cfg file has been moved from the server installion directory.	Move the SLic.cfg file back to the server installation directory or run the License Installation program again.
All Licenses are full but no one is currently using the program.	The last user was not sucessly logged out of the program.	Use the WLS Licence Manager to remove all users.